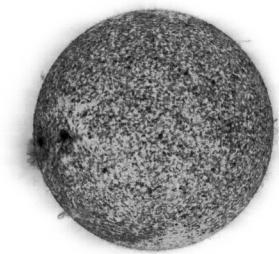


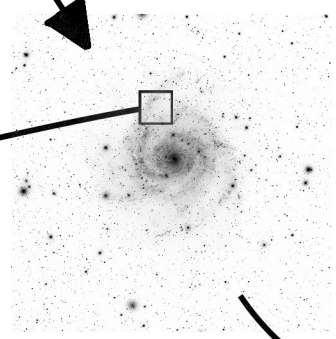
The Earth is revolving around the Sun at about 28 kps!



The Earth is rotating on its axis at about 1,600 kph (at the equator).

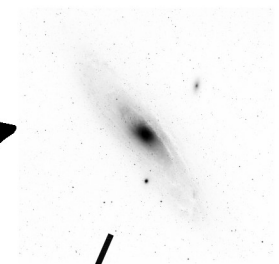
2008/03/24 01:18

The Sun is orbiting the galactic center taking about 250 million years for each orbit even though it is traveling over 200 kps!



You Are Here

Our galaxy is flying toward our nearest big neighbor, the Andromeda galaxy, 2.5 million light years away, at 130 kps



And our entire local group of galaxies is speeding off toward the center of the Virgo cluster at 5,000 kps!

